



952 School Street #111
Napa, CA 94559
707-205-5706
mmichie@fitenvironmental.com

AHERA RE-INSPECTION

Sequoia High School
1201 Brewster Avenue
Redwood City, CA 94062

Prepared for:

Sequoia Union High School District
480 James Ave
Redwood City, CA 94062

Project No.: 20-011
Date: February 18, 2020

Contents

EXECUTIVE SUMMARY 2

 RESPONSE ACTIONS 3

 1 PROJECT SUMMARY 4

 2 FIELD AND ANALYTICAL METHODOLOGY 4

 3 RECOMMENDATIONS..... 4

 4 ASSUMPTIONS AND LIMITATIONS 5

 5 SIGNATORY 5

Appendices

- Appendix A: Material Inventories
- Appendix B: F.I.T. Environmental Services Certifications

EXECUTIVE SUMMARY

F.I.T. Environmental Services (F.I.T. Services) conducted an AHERA re-inspection of Sequoia High School, located at 1201 Brewster Avenue Redwood City, California. F.I.T. Services Certified Asbestos Consultants conducted the following activities to document the project:

- Visual inspection of known asbestos containing building materials (ACBM), both friable and non-friable.
- Identification of friable and non-friable ACBM.
- Assessment of friable and damaged non-friable ACBM.

All except one of the known asbestos containing building materials from the 1995 CTL Environmental Services AHERA 3-year re-inspection that have not been removed, are in good condition and have been assigned a response action priority number of 8. The 9" off white w/lite grey vinyl floor tile & mastic is damaged. This ACBM is located in the janitor's closet and PE 2 in the girl's gym and has been assigned a response action priority number of 3. See Appendix A.

RESPONSE ACTIONS

Response Action Priorities

- 1) Isolate area and restrict access. Immediate removal is mandatory; contact an Accredited Project Designer (APD).
- 2) Isolate area and restrict access. Repair or Remove Immediately; contact an APD. If ACBM remains following response action, follow up with O&M; restrict access to reduce disturbance potential.
- 3) Continue O&M. Limit access to reduce disturbance potential. Schedule repair or removal on a priority basis; contact an APD. If ACBM remains following response action, follow up with O&M; limit access to reduce disturbance potential.
- 4) Continue O&M. Limit access to reduce disturbance potential. Schedule repair or removal when practical and cost effective; contact an APD.
- 5) Continue O&M. Schedule repair or removal when practical and cost effective; contact an APD.
- 6) Same as 5 (lower priority basis).
- 7) Continue O&M. Reduce disturbance potential where practical. Remove when practical and cost effective; contact an APD.
- 8) Continue O&M until major renovation/demolition requires removal under NESHAPs or until hazard potential changes. Remove when practical and cost effective; contact an APD.

CLIENT: Sequoia Union High School District
480 James Ave.
Redwood City, CA 94062

ATTENTION: Walter Haub

REF.: AHERA Re-inspection
Sequoia High School
1201 Brewster Avenue
Redwood City, CA 94062

1 PROJECT SUMMARY

F.I.T. Services conducted an AHERA re-inspection of Sequoia High School, located at 1201 Brewster Avenue Redwood City, California. Patrick Garrett a certified Asbestos Consultant and EPA-accredited Building Inspector, conducted the inspection on February 18, 2020.

2 FIELD AND ANALYTICAL METHODOLOGY

The inspection was conducted in accordance with protocol set forth in the Asbestos Hazard Emergency Response Act (AHERA) *40 CFR 763 Subpart E*.

The re-inspection activities include the following elements:

- Visual inspection of known asbestos containing materials (ACM), both friable and non-friable.
- Identification of friable and non-friable ACM.
- Assessment of friable and damaged non-friable ACM.

3 RECOMMENDATIONS

During the inspection it was observed that new flooring had been installed throughout. Without documentation of abatement of original flooring, it is assumed that the original flooring was covered over with new floor tiles or carpet. ACM should be monitored and maintained as part of the Carlmont High School's operations and maintenance program until renovations or demolition activities require removal. Prior to removal or demolition activities these materials shall have samples collected by an EPA-accredited building inspector and analyzed via polarized light microscopy (PLM) in accordance with the method specified in appendix A Subpart F 40 CFR part 763, section 1. Remove or repair these materials when practical and cost effective in conjunction with an EPA-accredited Project Designer.

4 ASSUMPTIONS AND LIMITATIONS

This report was prepared exclusively for the use by Sequoia Union High School District and may not be relied upon by any other person or entity without F.I.T. Environmental Services express written permission. The information, conclusions, and recommendations described in this report apply to conditions existing at certain locations when services were performed and are intended only for the specific purpose, locations, time frames, and project parameters indicated. F.I.T. Environmental Services cannot be responsible for the impact of any changes in environmental standards, practices, or regulations after performance of services,

In performing our professional services, we have applied present engineering and scientific judgement and used a level of effort consistent with current standard of practice for similar types of studies.

As applicable, F.I.T. Environmental Services has relied in good faith upon representations and information furnished by individuals with respect to operations and existing property conditions, to the extent that they have not been contradicted by data obtained from other sources. Accordingly, F.I.T. Environmental Services accepts no responsibility for any deficiencies, omissions, misrepresentations, or fraudulent acts of persons interviewed.

F.I.T. Environmental Services will not accept any liability for loss, injury claim, or damage arising directly or indirectly from any use or reliance on this report. F.I.T. Services makes no warranty, expressed or implied.

This report is issued with the understanding that the client, the property owner, or its representative is responsible for ensuring that the information, conclusion, and recommendations contained herein are brought to the attention of the appropriate regulatory agencies, as required.

If you have any questions, please do not hesitate to contact the undersigned at 707-205-5706. We appreciate the opportunity to be of service to Sequoia Union High School District.

5 SIGNATORY

Respectfully Submitted by:

F.I.T. Environmental Services



Patrick Garrett, CAC (#15-5359)

Vice President, Principal Consultant

Reviewed by:

F.I.T. Environmental Services



Michael Michie, CAC (#11-4729)

President, Principal Consultant

Appendix A

Material Inventories



Client: Sequoia Union High School District
 Project No.: 20-011
 Project Name: AHERA re-inspection-Sequoia High School
 Re-inspection: Patrick Garrett

Material Class (1)	Material	Material Location	Current Assessment (2)	Friable (Y or N)	Approximate Quantity	Results (3)/ Percentage	Recommendations/ Response Action (4)
M	Vinyl Floor Tile & Mastic	Music & Auditorium			2,700 sf.		Abated/Removed
M	12" White VFT & Mastic	General Metals & Lenkurt			3,500 sf.		Abated/Removed
M	9" Brown VFT & Mastic	Former Auto Shop			3,000 sf.		Abated/Removed
TSI	Elbow Insulation	Former Auto Shop			30 ea.		Abated/Removed
TSI	Pipe Insulation	Former Auto Shop			710 ln. ft.		Abated/Removed
TSI	Elbow Insulation	Former Wood Shop			70 ea.		Abated/Removed
TSI	Pipe Insulation	Former Wood Shop			300 ln. ft.		Abated/Removed
TSI	Elbow Insulation (Steam)	Main Academic Building All Floors	ND	Y	500 ea.	POS	Abated/Removed
TSI	Pipe Insulation (Steam)	Main Academic Building All Floors	ND	Y	1,000 ln. ft.	POS	Abated/Removed
M	Ceiling Panels	Main Academic Building All Floors	ND	Y	37,000 sf.	POS	8
M	Asbestos Cement Panel	Main Academic Building All Floors	ND	N	10,800 sf.	POS	8
M	9" Vinyl Floor Tile & Mastic	Main Academic Building All Floors	ND	N	14,900 sf.	POS	8
M	Ceiling Panels	Cafeteria/Student Union	ND	Y	5,000 sf.	POS	8
M	9" & 12" Vinyl Floor Tile & Mastic	Cafeteria/Student Union	ND	N	1400 sf.	POS	8
M	Asbestos Cement Panel	Cafeteria/Student Union	ND	N	1,500	POS	8
M	9" Off White W/lite Grey VFT & Mastic covered with Metal	Girl's Gym PE 2	SD	N	50 sf.	POS	3
M	9" Off White W/lite Grey VFT & Mastic	Girl's Gym PE Rooms	ND	N	6,100 sf.	POS	8
TSI	Elbow Insulation (steam)	Girl's Gym	ND	Y	28 ea.	POS	8
TSI	Pipe Insulation (Steam)	Girl's Gym	ND	Y	132 ln. ft.	POS	8
TSI	Elbow Insulation (Steam)	Boy's Gym	ND	Y	80 ea.	POS	8
TSI	Elbow Insulation (Hot Water)	Boy's Gym	ND	Y	50 ea.	POS	8
M	Vinyl Floor Tile & Mastic	Building Q-Music/Theatre					Abated/Removed

- (1) S: Surfacing, TSI: thermal system insulation, M: miscellaneous
 (2) ND: not damaged, D: damaged, SD: significantly damaged
 (3) POS: positive for asbestos, NEG: negative for asbestos, ASSUMED: not sampled, assumed asbestos containing.
 (4) For response actions 1-8 refer to "Response Action Ratings Sheet"

Appendix B

F.I.T. Services Certifications

Division of Occupational Safety and Health
Certified Asbestos Consultant

Patrick J Garrett

Name



Certification No. 15-5359

Expires on 02/11/21

This certification was issued by the Division of Occupational Safety and Health as authorized by Sections 7180 et seq. of the Business and Professions Code.

AHERA INSPECTION REPORT (1989)

SAMPLE / MATERIAL LOCATION DIAGRAMS

As part of the AHERA Asbestos Inspection the locations of samples collected are recorded on building diagrams. In addition to the sample locations, specific damage areas are recorded where found. The following pages provide the sample location diagrams for the School District. These drawings are organized in the same manner as the inspection/management plan data, i.e. campus one building one is first.

The title block contains the specific state, district, campus, and building or code with a 12 digit number. Next is the District Name, the Campus Name, and finally the Building Name. The next block provides the date the drawing was made, the street number, and finally the H-K drawing number.

The drawing uses several symbols and cross-hatching patterns to illustrate the key elements of the survey information.

SAMPLE LOCATION: The specific locations of samples are found on a point on the drawing leading to a symbol indicating the sample number and the Bulk Sample (BS) Code, which represents the type of material sampled. The Bulk Sample Code descriptions used are as follows:

BS CODE	DESCRIPTION	BS CODE	DESCRIPTION
0	Unknown	26	Transite Pipe
1	Acoustical Plaster	27	Transite Hood
2	Acoustical/Thermal Insul	28	Asbestos Pads
3	Hardwall/Ceiling Plaster	29	Asbestos Glove
4	Vinyl Floor Tile	30	Asbestos Rope
5	Pipe Covering	31	Raw Asbestos
6	Corrugated Pipe Covering	32	Electrical Wiring
7	Wrapped Paper Pipe Cover	33	Fire Hose
8	Boiler/Tank Insulation	34	Fire Door
9	Breeching/Exhaust Packing	35	Fire Suit
10	Woven Paper/Tape	36	Fire Brick
11	Drop or Lay-in Panel	37	Lab Counter Top
12	Acoustical Tile (1x1)	38	Fiber Frack Kiln
13	Fire or Stage Curtain	39	Tongs
14	MJP on Non-Suspect Pipe	40	Poured in Insulation
15	MJP on Pipe Covering	41	Contaminated Soil
16	MJP on Corr. Pipe Cover	42	Tectum
17	MJP on Wrapped Pipe Cover	43	Floor Underlayment
18	Fireproofing	44	Hard Grout
19	Vibration Joint Cloth	45	Mortar
20	Interior Duct Insulation	46	Blown or Scratch Coat
21	Exterior Duct Insulation	47	Oven/Autoclave Lining
22	Blown-in Insulation	48	Brake Lining
23	Stored Insulation	49	Theatre Curtain
24	Debris	50	Transite Siding
25	Gasket	99	Other

DAMAGE AREAS: When the inspector encounters a section of material in a Unified Sampling Area (USA) which contains localized damage in worse condition than the remainder of the same material contained in this USA, a Damage Area indicator is placed on the drawing. This symbol contains specific information about the damaged area.

Type of Material - The BS Code of the material is indicated so that the type of material can be determined. See the previous section for the listing of the BS codes used.

Quantity - The quantity of material which was found to be damaged is also indicated.

Location - The location of the localized damage is indicated in the symbol. This provides assistance in identifying where the damage can be found.

Response Action - This is the code for the recommended AHERA response action. The following codes are used:

1. Isolate Area Immediately
2. Gross Removal
3. Glove Bag Removal
4. Encapsulation
5. Enclosure
6. Repair and O&M
7. O&M and Monitor

CROSSHATCHING: Crosshatching patterns are used to detail the location of ceiling and floor material suspected of containing asbestos. There are three patterns used:

Floor Tile - This pattern is used to indicate floor tile and sheet flooring material suspected of containing asbestos.

Drop / Lay-in, Acoustical - This pattern is used to indicate the locations of a variety of ceiling tiles including, but not limited, to 1' x 1' and 2' x 4' lay-in panels.

Spray / Trowel Applied Materials - This pattern is used to indicate the presence of spray and trowel applied materials such as fireproofing and acoustical plaster.

LOCATION of CAUTION LABEL: The AHERA regulations require the use of labels indicating the presence of Asbestos Containing Building Material (ACBM). The label is to be placed on or near ACBM in routine maintenance areas in all school buildings. When this label is applied in the field the inspector identifies its location on the sample location diagram. On the drawing, the label symbol contains information about its placement within the routine maintenance area so that it may be readily found by the LEA. The label states the following.

**CAUTION
ASBESTOS. HAZARDOUS.
DO NOT DISTURB
WITHOUT PROPER TRAINING
AND EQUIPMENT**

The presence of sample numbers, crosshatching, and damage areas does not mean that all of the areas indicated contain asbestos. These location diagrams are a record of the field inspection only and are meant to show where samples were taken and what areas may be affected if asbestos is present. To determine which areas are affected, a review of the Inspection / Management Plan Data and the Petrographic Results contained in Sections 4 and 5 should be made. If desired, the location diagrams can be highlighted by the school district's asbestos coordinator to indicate the presence of asbestos containing material.

CAUTION
BOILER ROOM
ENTRANCE

Location
of Caution
Label

BS01
00-02

Sample
Location

Bulk Sample
Description

Sample
or
Sample Range

Bulk Sample
Description

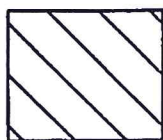
Location of
Material

BSCODE	QUANTITY
LOCATION	RESPONSE CODE

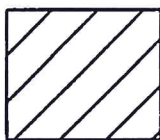
Damage
Area

RESPONSE
CODE

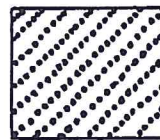
Quantity Includes
Square Footage,
Number of Elbows,
or
Linear Distance



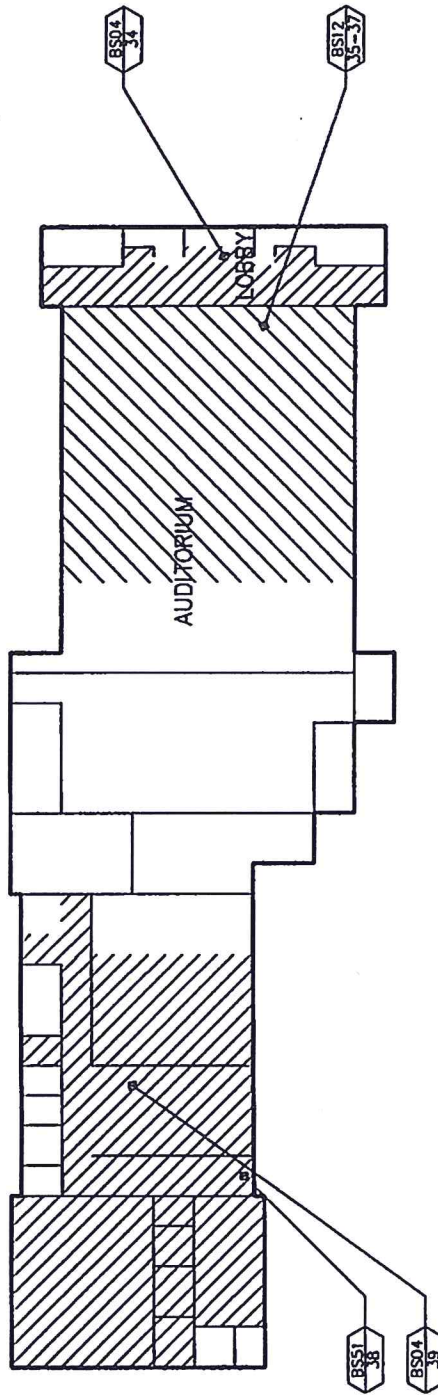
Vinyl
Floor Tile



Drop,
Lay In,
Acoustical



Spray
Applied
Material



LEGEND:



VINYL
FLOOR
TILE



DROP,
LAY IN,
ACOUSTICAL



SPRAY/TROWEL
APPLIED,
MATERIAL



CAUTION
BOILER ROOM
ENTRANCE



SAMPLE
LOCATION



DAMAGE
AREA



RESPONSE
CODE

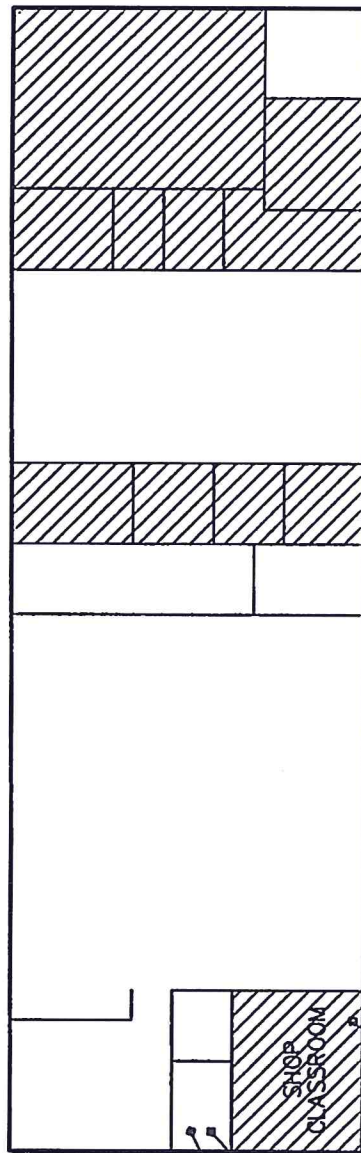
— HALL/TORRELL —
INTERNAL SPACE
400 WEST FIFTH STREET
LAWRENCE, MASS 01840

DATE
12/14/88

002001

— AHRA —
COMPLIANCE PROGRAM

05-9018-002-001
SEQUOIA UNION SCHOOL DISTRICT
SEQUOIA HIGH SCHOOL
MUSIC AND AUDITORIUM



TOOL
ROOM

BS14
41-43

SHOP
CLASSROOM

BS04
40

LEGEND:



VINYL
FLOOR
TILE



DROP
LAY IN
ACCOUSTICAL



SPRAY/TROWEL
APPLIED
MATERIAL



CAUTION
BOILER ROOM
ENTRANCE



SAMPLE
LOCATION



LOCATION
DAMAGE
AREA



QUANTITY
RESPONSE
CODE

— HALL TROWEL —
PNEUMATIC SPRAY
450 WEST FT. ST. ST.
LIVESTOCK, AUGUS 8004

DATE
12/14/88

002002

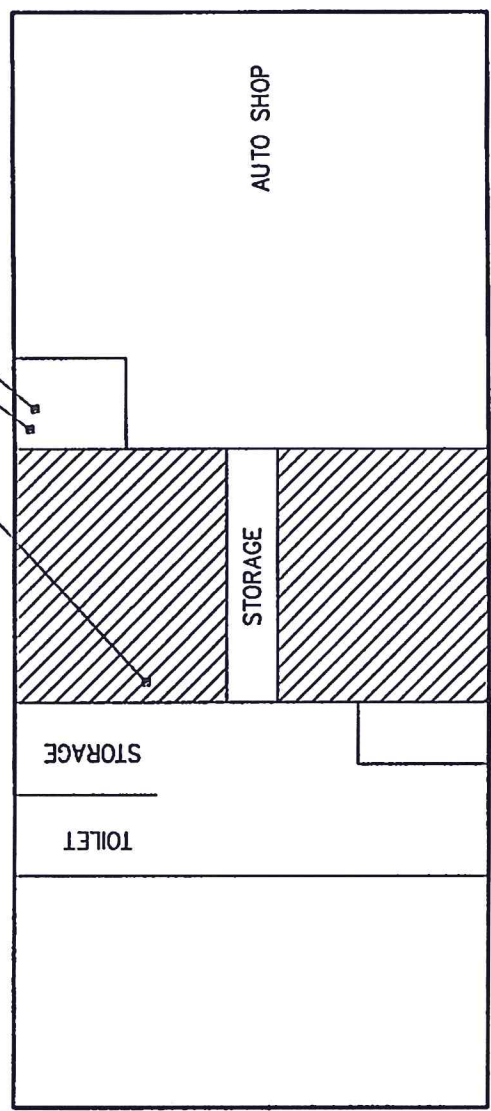
ASERA
COMPLIANCE PROGRAM
05-9018-002-002
SEQUOIA UNION SCHOOL DISTRICT
SEQUOIA HIGH SCHOOL
GENERAL METALS BUILDING



BS04
51

BS15
52-54

BS05
55-57



LEGEND:



VINYL
FLOOR
TILE



DROP,
LAY IN,
ACoustical



SPRAY/TROWEL
APPLIED,
MATERIAL



CAUTION
BOILER ROOM
ENTRANCE



SAMPLE
LOCATION



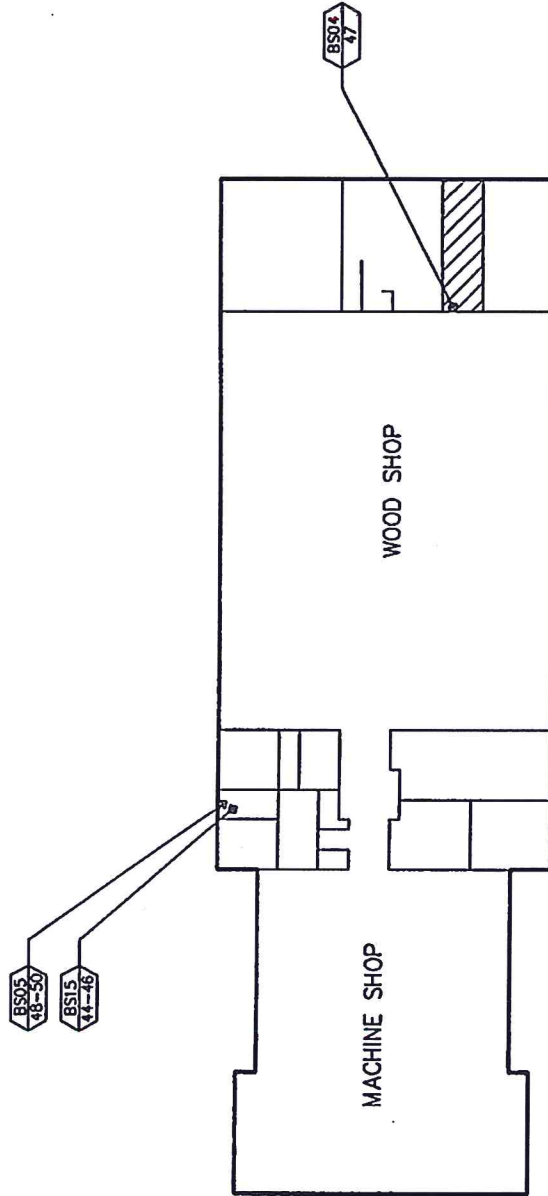
BS CODE QUANTITY
LOCATION

DAMAGE
AREA

RESPONSE
CODE

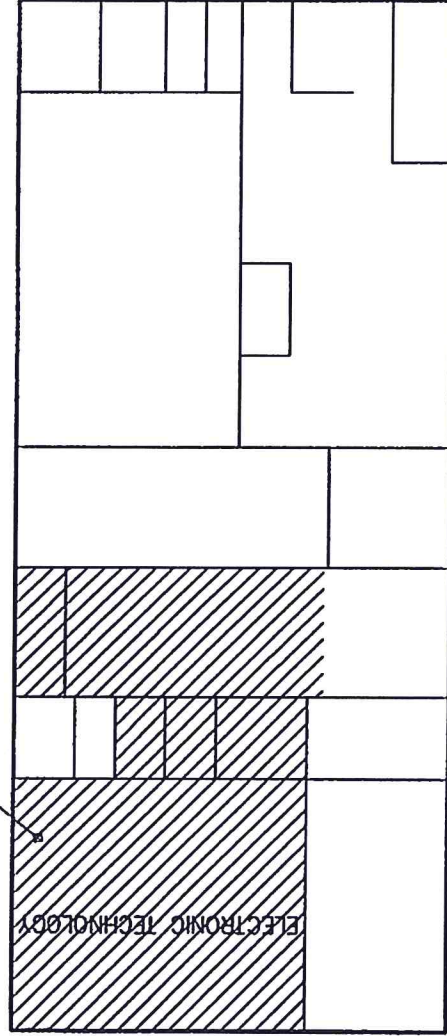
— HALL TOWEL	DISPOSABLE SPEC.
	400 WEST FT. ST. ST. 8000 LAFAYETTE, MISS. 39044
DATE	002003 12/14/88

HERA COMPLIANCE PROGRAM
05-9018-002-003 SEQUOIA UNION SCHOOL DISTRICT SEQUOIA HIGH SCHOOL AUTO SHOP

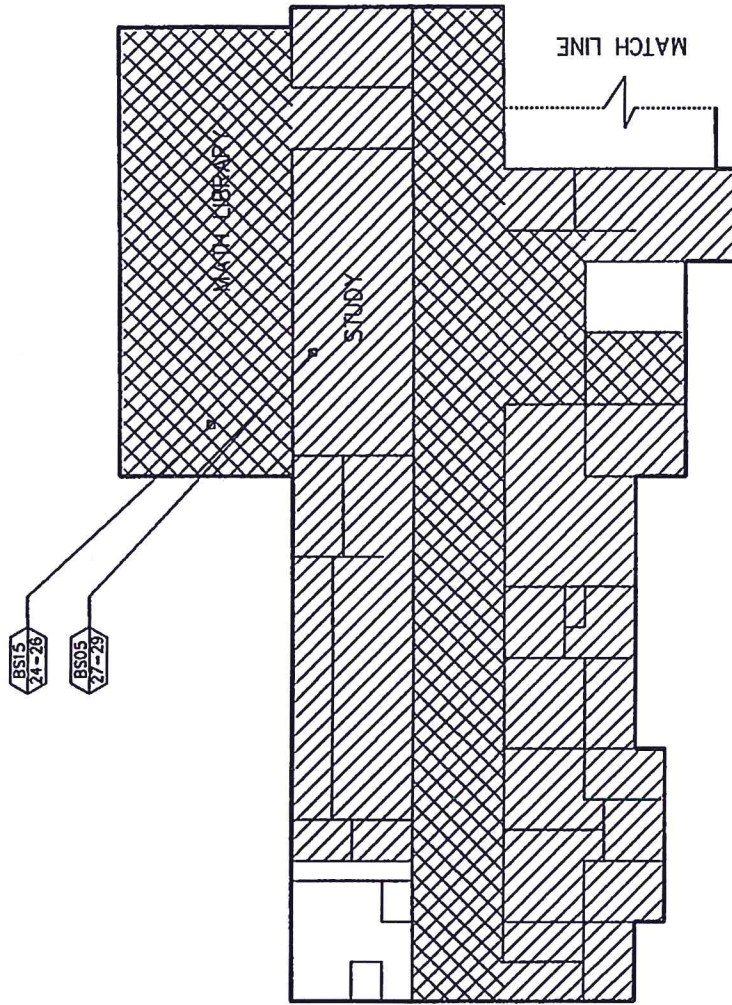


LEGEND: VINYL FLOOR TILE DROP, LAY IN, ACOUSTICAL SPRAY/TROWEL APPLIED, MATERIAL		CAUTION BOILER ROOM ENTRANCE LOCATION OF CAUTION LABEL	BS01 00-02 SAMPLE LOCATION	BS CODE QUANTITY LOCATION DAMAGE AREA	RESPONSE CODE	HAUL-YOUNG 420 WEST 17TH ST LINCOLN, NE 68504 DATE 12/14/88	ASHERA COMPLIANCE PROGRAM 05-9018-002-004 SEQUOIA UNION HIGH SCHOOL SEQUOIA HIGH SCHOOL WOOD SHOP BUILDING
--	--	--	-------------------------------------	---	-------------------------	--	--

BS04
58



LEGEND:		VINYL FLOOR TILE
		DROP, LAY IN, ACoustICAL
		SPRAY/TROWEL APPLIED MATERIAL
		CAUTION BOILER ROOM ENTRANCE
		BS01 00-07
		SAMPLE LOCATION
		BS0001 QUANTITY
		LOCATION
		DAMAGE AREA
		RESPONSE CODE
— HALL—DARRELL		DATE 12/14/88
— HALL—DARRELL		002005
AHRA COMPLIANCE PROGRAM		05-9018-002-005
		SEQUOIA UNION SCHOOL DISTRICT
		SEQUOIA UNION HIGH SCHOOL
		ROP SHOP



FIRST FLOOR



LEGEND:



VINYL
FLOOR
TILE



DROP,
LAY IN,
ACoustical



SPRAY/TROWEL
APPLIED,
MATERIAL



CAUTION
BOILER ROOM
ENTRANCE
LOCATION
OF CAUTION
LABEL



SAMPLE
LOCATION



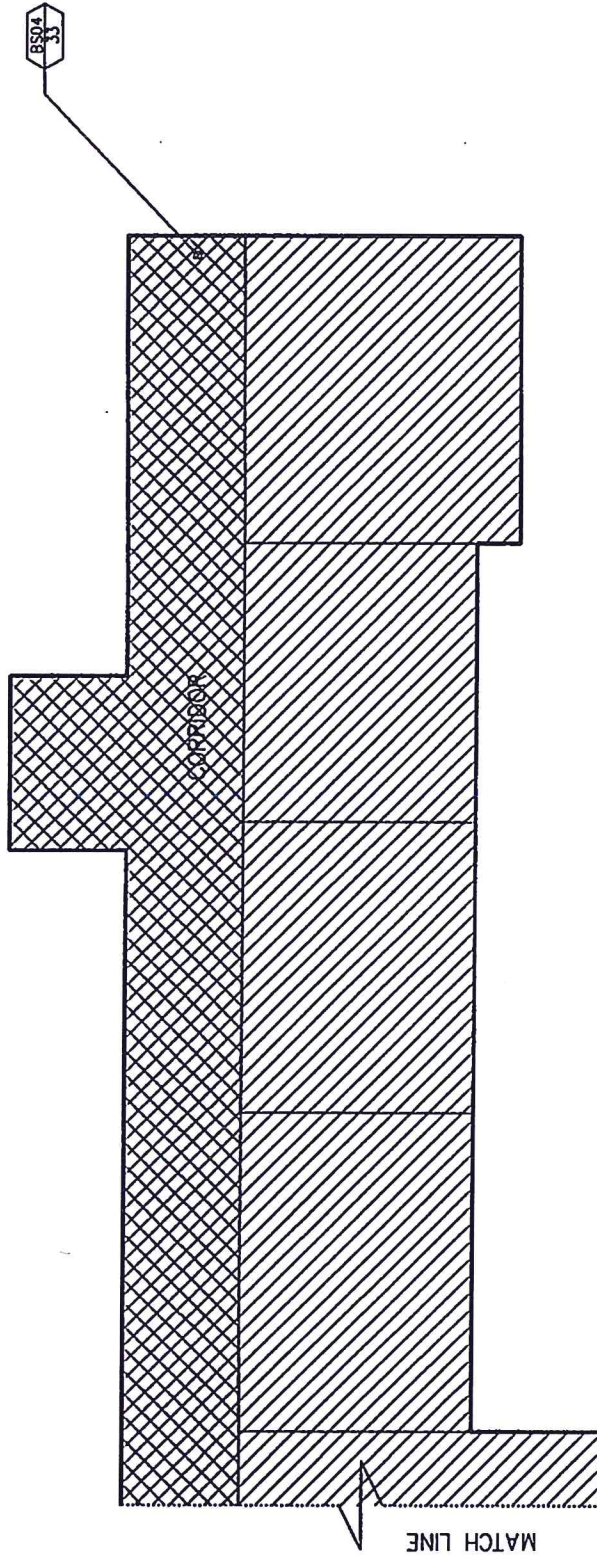
DAMAGE
AREA



RESPONSE
CODE

— BALL TROWEL <small>EXPERIMENTAL SYMBOL</small>	
450 WEST FIFTH STREET LIVERMORE, CALIF. 94550	
DATE	002006A
12/14/88	

— AHERA <small>COMPLIANCE PROGRAM</small>	
05-9018-002-006 SEQUOIA UNION SCHOOL DISTRICT SEQUOIA HIGH SCHOOL ACADEMICS/EAST WING	



FIRST FLOOR

LEGEND:



VINYL
FLOOR
TILE



DROP
LAY IN.
ACCOUSTICAL



SPRAY/TROWEL
APPLIED
MATERIAL



CAUTION
BOILER ROOM
ENTRANCE



SAMPLE
LOCATION



DAMAGE
AREA



RESPONSE
CODE

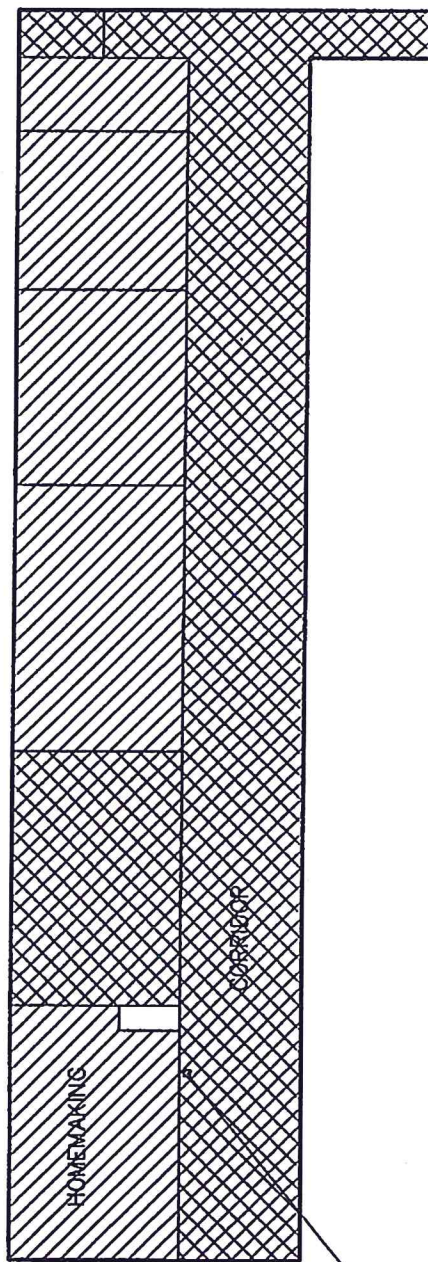
— HALL, TUNNEL, ENTRANCE, STAIR —
440 WEST FIFTH STREET
LINCOLN, NEBRASKA 68504

DATE
12/14/88

002006B

AHERA
COMPLIANCE PROGRAM

05-9018-002-006
SEQUOIA UNION SCHOOL DISTRICT
SEQUOIA HIGH SCHOOL
ACADEMICS/EAST WING



FIRST FLOOR

LEGEND:

VINYL
FLOOR
TILE

DROP
LAY IN
ACCOUSTICAL

SPRAY/TROWEL
APPLIED
MATERIAL

CAUTION
BOILER ROOM
ENTRANCE
LOCATION
OF CAUTION
LABEL

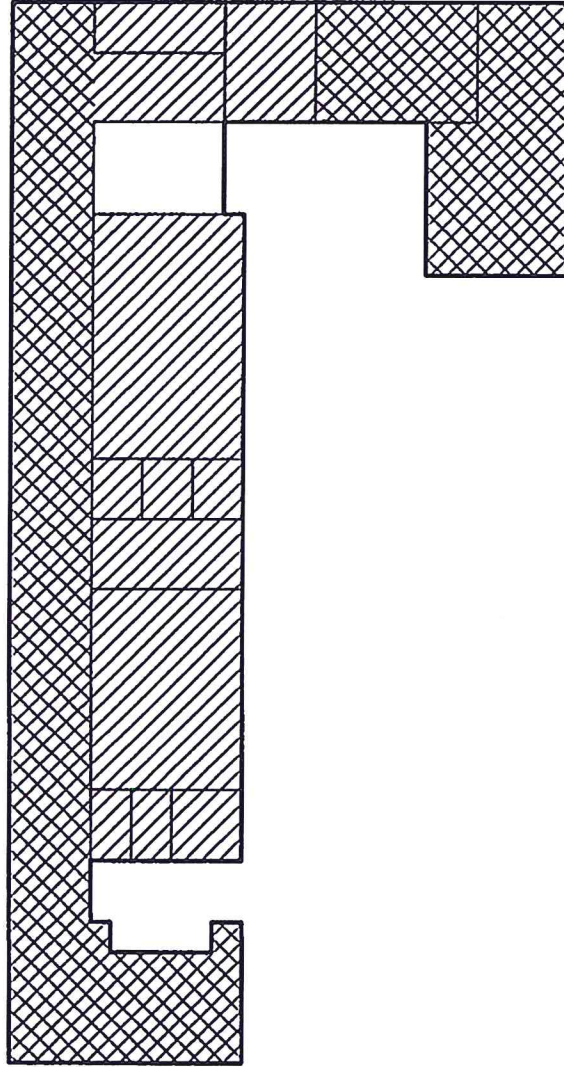
BSI
00-02
SAMPLE
LOCATION

BS CODE QUANTITY
LOCATION DAMAGE
AREA

RESPONSE
CODE

HAL-KOBBEL
440 WEST FIFTH STREET
LAUREL, KANSAS 66044
DATE 12/14/88
002006C

AFERA
COMPLIANCE PROGRAM
05-9018-002-006
SEQUOIA UNION SCHOOL DISTRICT
SEQUOIA HIGH SCHOOL
ACADEMICS/NORTH WING



FIRST FLOOR



LEGEND:



VINYL
FLOOR
TILE



DROP
LAY IN
ACCOUSTICAL



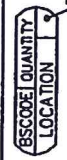
SPRAY/TROWEL
APPLIED
MATERIAL



CAUTION
BOILER ROOM
ENTRANCE
LOCATION
OF CAUTION
LABEL



SAMPLE
LOCATION



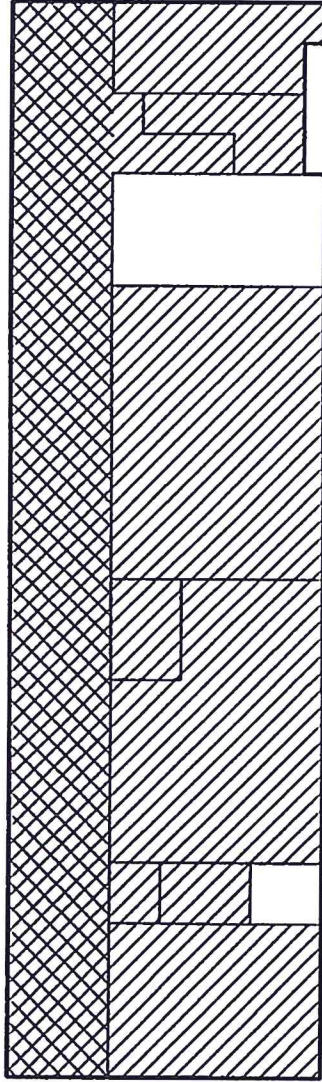
DAMAGE
AREA
RESPONSE
CODE

— HALL-WARDEN —
4240 WEST PITTSTON STREET
LAUREL, MONTGOMERY 2004

DATE
12/14/88
002006D

AFERA
COMPLIANCE PROGRAM

05-9018-002-006
SEQUOIA UNION SCHOOL DISTRICT
SEQUOIA HIGH SCHOOL
ACADEMICS/NORTH WING



FIRST FLOOR



LEGEND:



VINYL
FLOOR
TILE



DROP-
LAY IN,
ACOUSTICAL



SPRAY/TROWEL
APPLIED,
MATERIAL



CAUTION
BOILER ROOM
ENTRANCE
LOCATION
OF CAUTION
LABEL



SAMPLE
LOCATION



DAMAGE
AREA



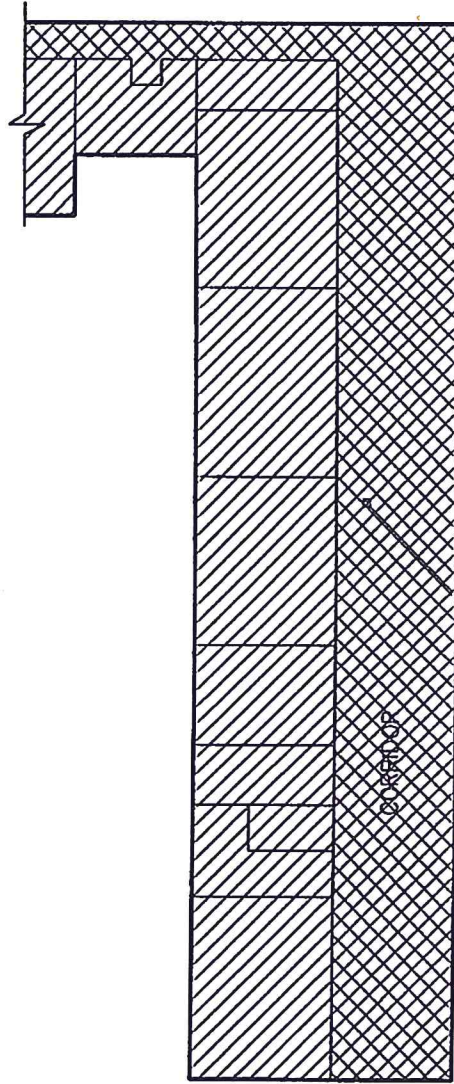
RESPONSE
CODE

HALL-TROWEL
REPAIRS
410 WEST PETER STREET
TAMPA, FL 33604
DATE
12/14/88

002006E

ASPER
COMPLIANCE PROGRAM

05-9018-002-006
SEQUOIA UNION SCHOOL DISTRICT
SEQUOIA HIGH SCHOOL
ACADEMICS/WEST WING



FIRST FLOOR



LEGEND:



VINYL
FLOOR
TILE



DROP
LAY IN
ACCOUSTICAL



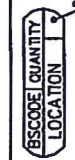
SPRAY/TROWEL
APPLIED
MATERIAL



CAUTION
BOILER ROOM
ENTRANCE



SAMPLE
LOCATION



BSCODE QUANTITY
LOCATION



DAMAGE
AREA



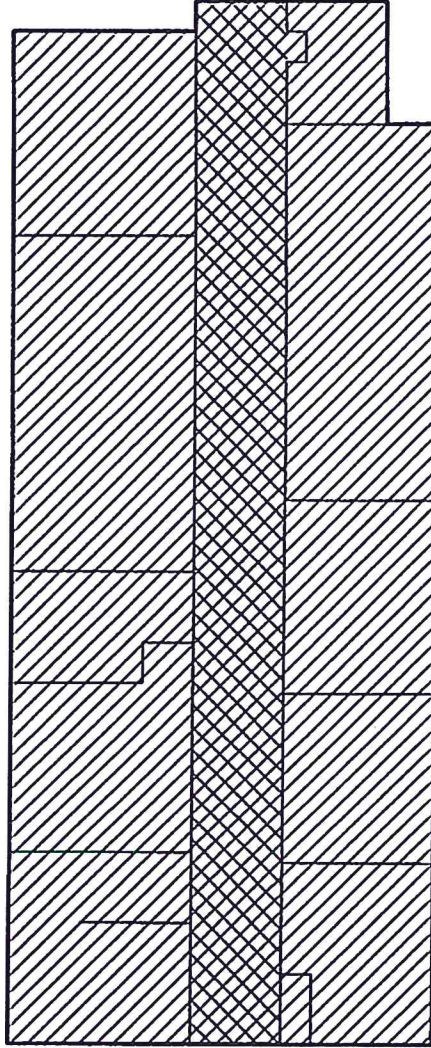
RESPONSE
CODE

HALL-TUMBLE
440 WEST FIFTH STREET
LIVENSE, KANSAS 66404

DATE
12/14/88

HERA
COMPLIANCE PROGRAM

05-9018-002-006
SEQUOIA UNION SCHOOL DISTRICT
SEQUOIA HIGH SCHOOL
ACADEMICS/WEST WING



FIRST FLOOR



LEGEND:



VINYL
FLOOR
TILE



DROP,
LAY IN,
ACoustical



SPRAY/TROWEL
APPLIED,
MATERIAL



CAUTION
BOILER ROOM
ENTRANCE



SAMPLE
LOCATION



DAMAGE
AREA



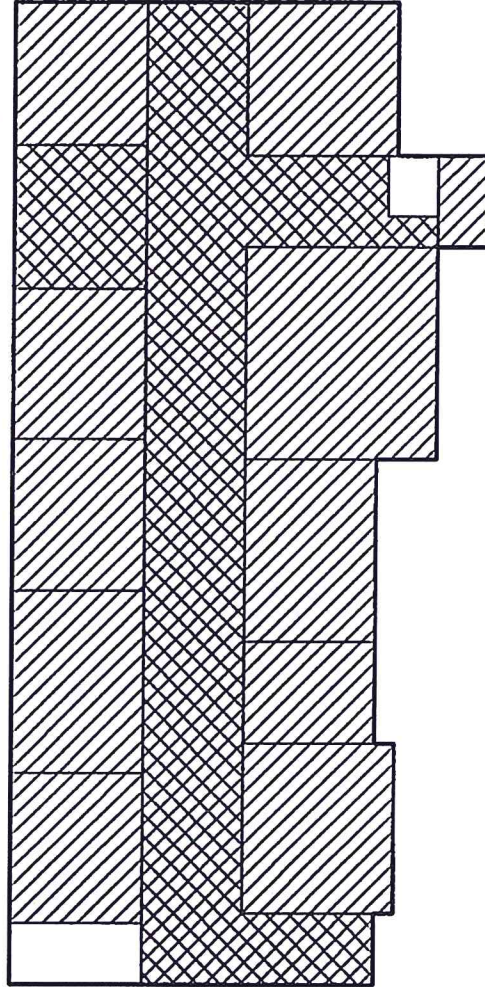
RESPONSE
CODE

HALL-TOWEL
DRESSING ROOM
400 WEST FIFTH STREET
LAUREL, MONTG 6004

DATE
12/14/88
002006G

AHERA
COMPLIANCE PROGRAM

05-9018-002-006
SEQUOIA UNION SCHOOL DISTRICT
SEQUOIA HIGH SCHOOL
COMMERCIAL WING



SECOND FLOOR



LEGEND:



VINYL
FLOOR
TILE



DROP
LAY IN
ACCOUSTICAL



SPRAY/TROWEL
APPLIED
MATERIAL



CAUTION
ROOM
ENTRANCE



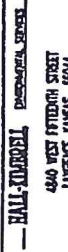
SAMPLE
LOCATION



DAMAGE
AREA



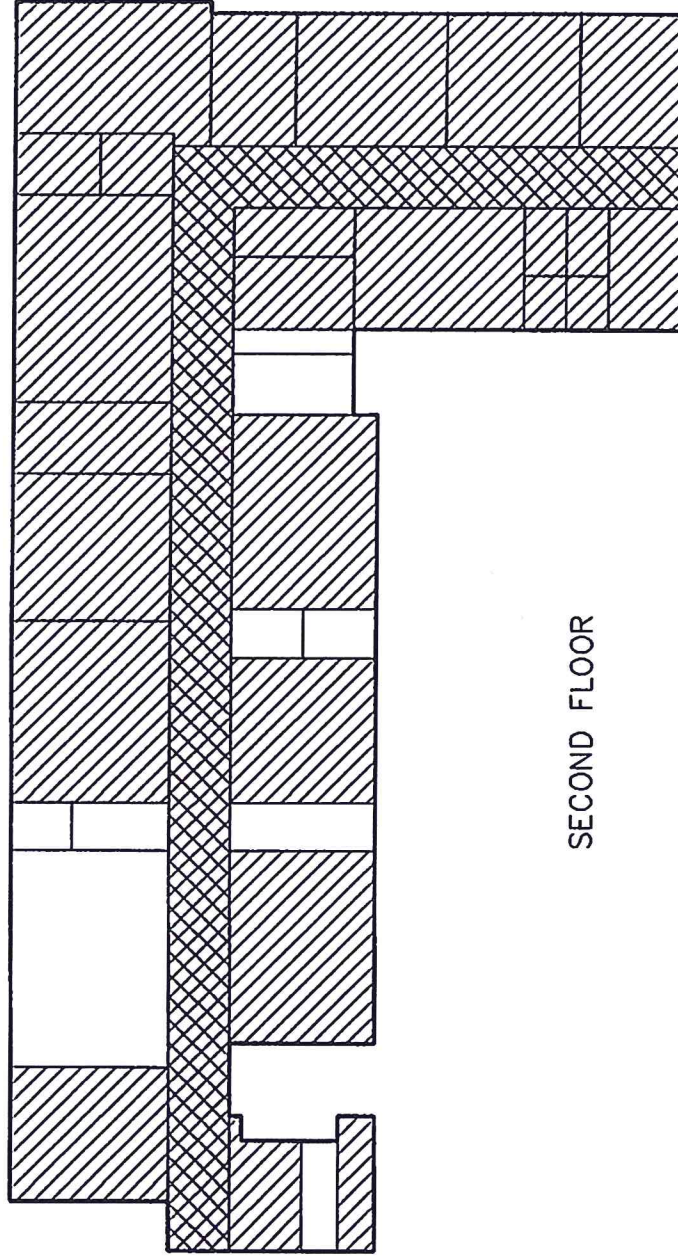
RESPONSE
CODE



HALL-CORRIDOR
DATE
12/14/88

HERA
COMPLIANCE PROGRAM

05-9018-002-006
SEQUOIA UNION SCHOOL DISTRICT
SEQUOIA HIGH SCHOOL
ACADEMICS/EAST WING



SECOND FLOOR



LEGEND:



VINYL
FLOOR
TILE



DROP
LAY IN,
ACCOUSTICAL



SPRAY/TROWEL
APPLIED,
MATERIAL



CAUTION
BOILER ROOM
ENTRANCE
LOCATION
OF CAUTION
LABEL



SAMPLE
LOCATION



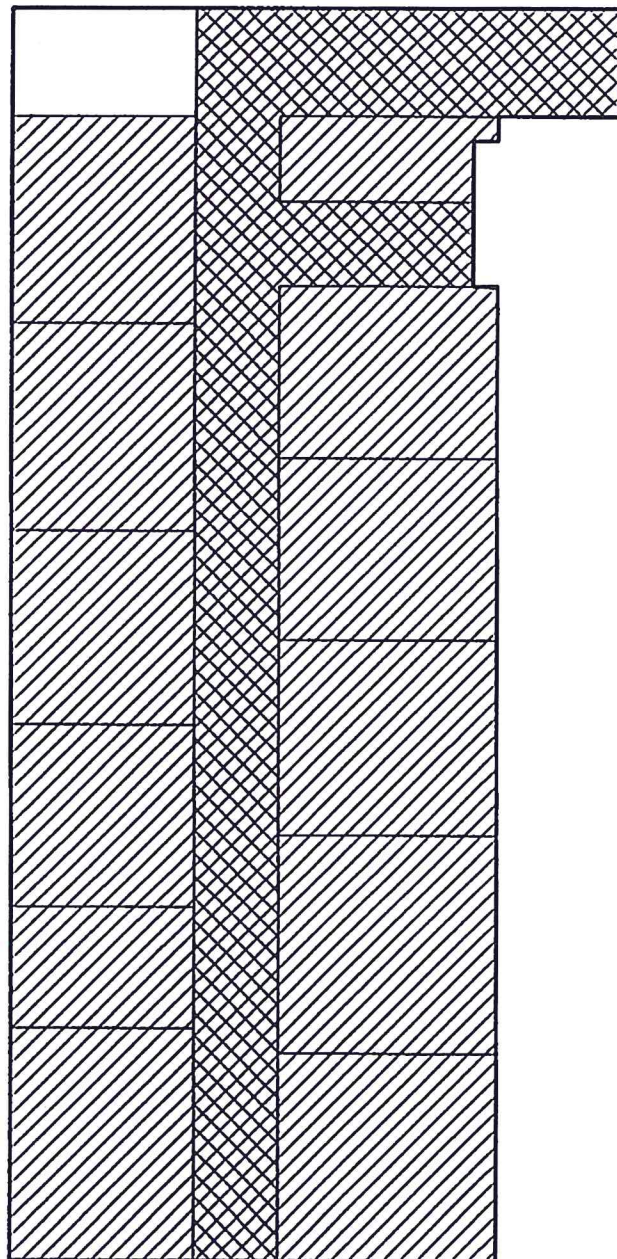
DAMAGE
AREA













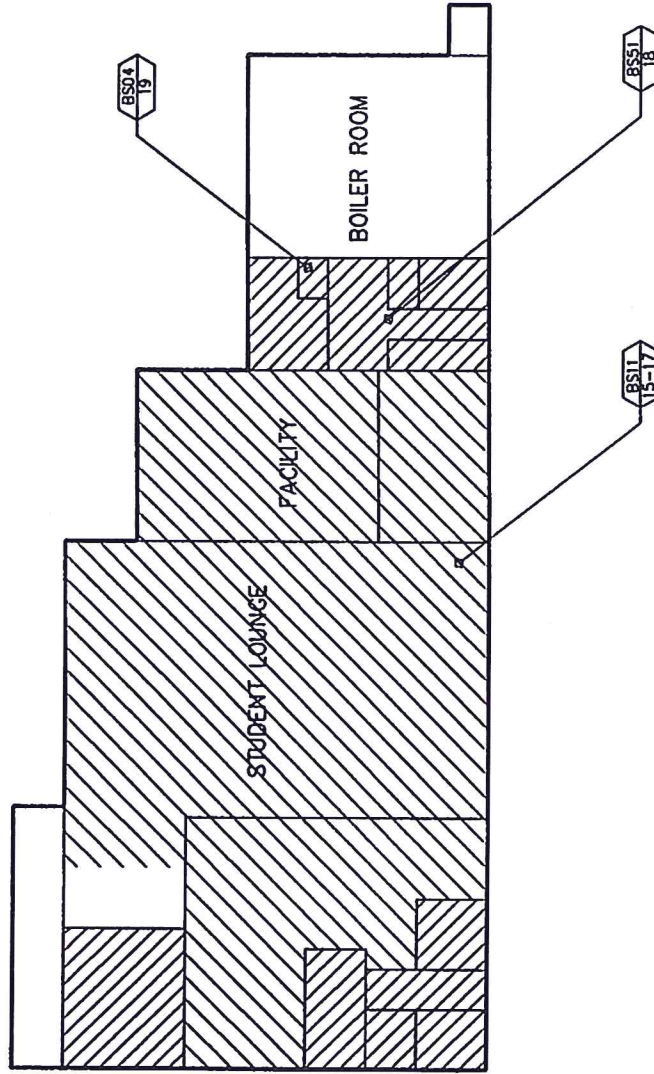
RESPONSE
CODE

HALL-TORRELL DEPARTMENT STREET 4500 WEST FIFTH STREET LAWRENCE, KANSAS 66044	
DATE 12/14/88	0020061

AHERA COMPLIANCE PROGRAM 05-9018-002-006 SEQUOIA UNION SCHOOL DISTRICT SEQUOIA HIGH SCHOOL ACADEMICS/NORTH WING
--



LEGEND:		 VINYL FLOOR TILE  DROP LAY IN ACCOUNTAL  SPRAY/TROWEL APPLIED MATERIAL		<div style="display: flex; justify-content: space-between;"> <div>  CAUTION BOILER ROOM ENTRANCE </div> <div>  BSOI 00-02 </div> <div>  ESCODE LOCATION </div> <div>  RESPONSE CODE </div> </div> <div style="display: flex; justify-content: space-between; margin-top: 10px;"> <div>  LOCATION OF CAUTION LABEL </div> <div>  SAMPLE LOCATION </div> <div>  DAMAGE AREA </div> </div>	
		<div style="display: flex; justify-content: space-between;"> <div> — HALL-MARBLE </div> <div> — COMPLIANCE SERIES — </div> </div> <div style="display: flex; justify-content: space-between; margin-top: 10px;"> <div> 4840 WEST PETERSON STREET LAKESIDE, KANSAS 66044 </div> <div> 05-9018-002-006 SEQUOIA UNION SCHOOL DISTRICT SEQUOIA HIGH SCHOOL ACADEMICS/WEST WING </div> </div>			
		<div style="display: flex; justify-content: space-between;"> <div> DATE 12/14/88 </div> <div> 002006J </div> </div>			



FIRST FLOOR

LEGEND:



VINYL
FLOOR
TILE



DROP
LAY IN,
ACOUSTICAL



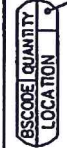
SPRAY/TROWEL
APPLIED,
MATERIAL



CAUTION
BOILER ROOM
ENTRANCE
LOCATION
OF CAUTION
LABEL



SAMPLE
LOCATION



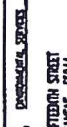
DAMAGE
AREA



RESPONSE
CODE



DATE
12/14/88



002007A



12/14/88



002007A



12/14/88



002007A



002007A



002007A



002007A



002007A



002007A



002007A



002007A



002007A



002007A



002007A



002007A



002007A



002007A



002007A



002007A



002007A



002007A



002007A



002007A



002007A



002007A



002007A



002007A



002007A



002007A



002007A



002007A



002007A



002007A



002007A



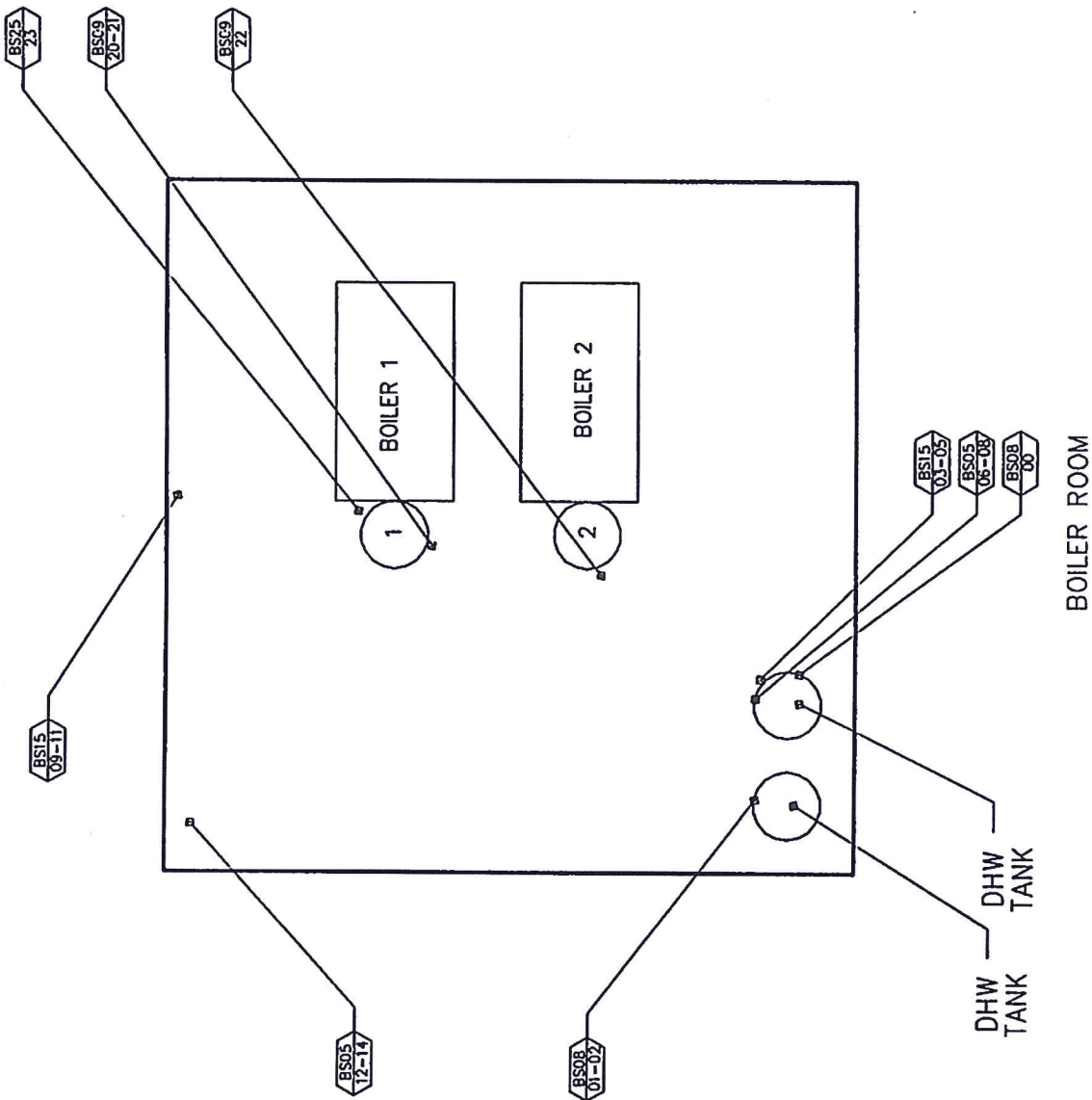
002007A



002007A



002007A



LEGEND:



VINYL FLOOR TILE



DROP LAY IN, ACOUSTICAL



SPRAY/TROWEL APPLIED, MATERIAL



CAUTION BOILER ROOM ENTRANCE



SAMPLE LOCATION



DAMAGE AREA

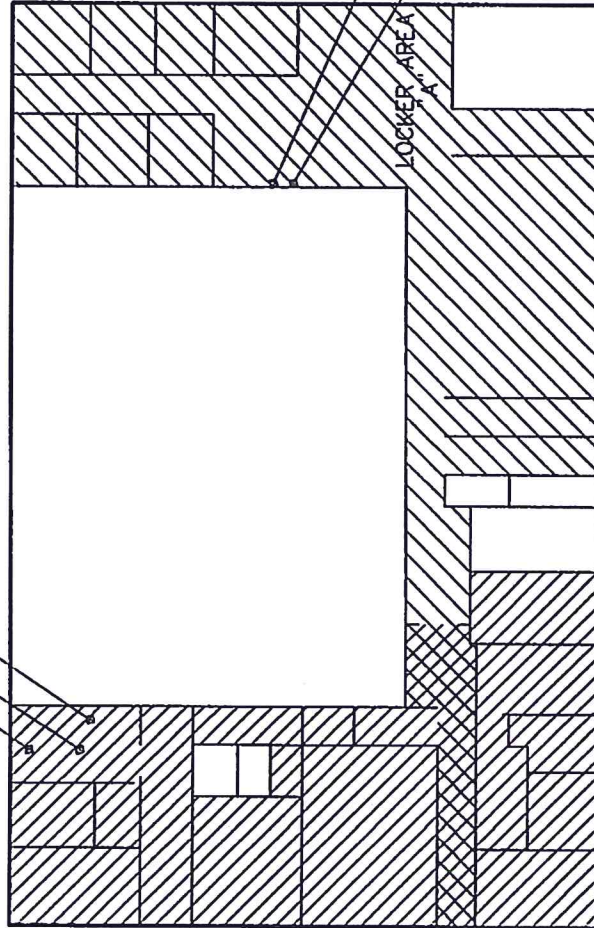


RESPONSE CODE

—	PAUL TROWELL	DEPARTMENT SUPERVISOR
4240 WEST PITTSTON STREET	LIVERMORE, CALIF. 94551	ROOM
DATE	12/14/88	002007B

ADHERA COMPLIANCE PROGRAM
05-9018-002-007
SEQUOIA UNION SCHOOL DISTRICT
SEQUOIA HIGH SCHOOL
STUDENT UNION BOILER ROOM

BS04
72
EQUIPMENT
ROOM
BS05
76-78



BS15
73-75

BS11
69-71



LEGEND:



VINYL
FLOOR
TILE



DROP,
LAY IN,
ACCOUSTICAL



SPRAY/TROWEL
APPLIED,
MATERIAL



CAUTION
BOILER ROOM
ENTRANCE
LOCATION
OF CAUTION
LABEL



BS01
00-02
SAMPLE
LOCATION



BSCODE QUANTITY
LOCATION DAMAGE
AREA

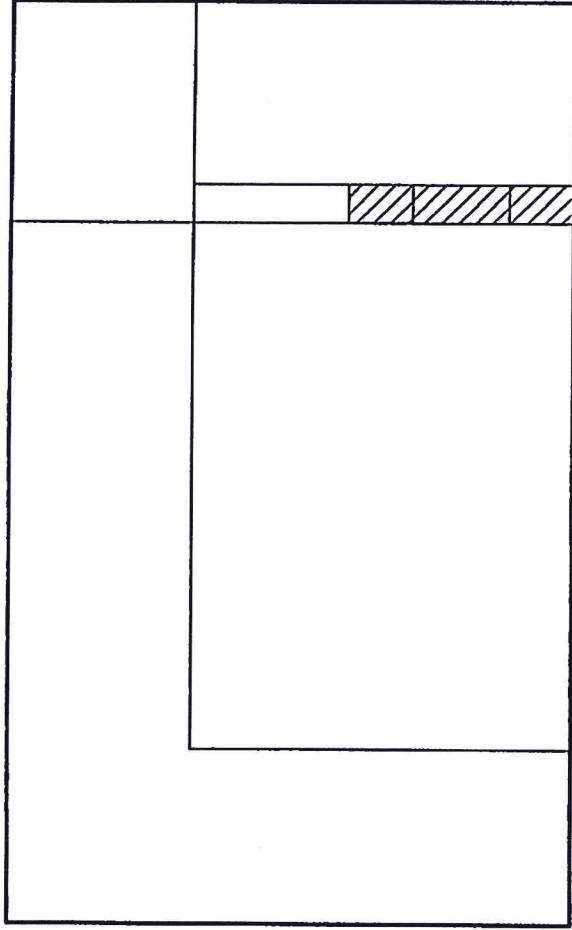


RESPONSE
CODE

— BALL-TROWEL
4240 WEST FIFTH STREET
LAVERGNE, MONTGOMERY
DATE 12/14/88
002008A

AREA
COMPLIANCE PROGRAM

05-9018-002-008
SEQUOIA UNION SCHOOL DISTRICT
SEQUOIA HIGH SCHOOL
GIRLS GYMNASIUM



LEGEND: _____



VINYL
FLOOR
TILE



DROP,
LAY IN,
ACCOUSTICAL



SPRAY/TROWEL
APPLIED,
MATERIAL



CAUTION
BOILER ROOM
ENTRANCE



SAMPLE
LOCATION



DAMAGE
AREA



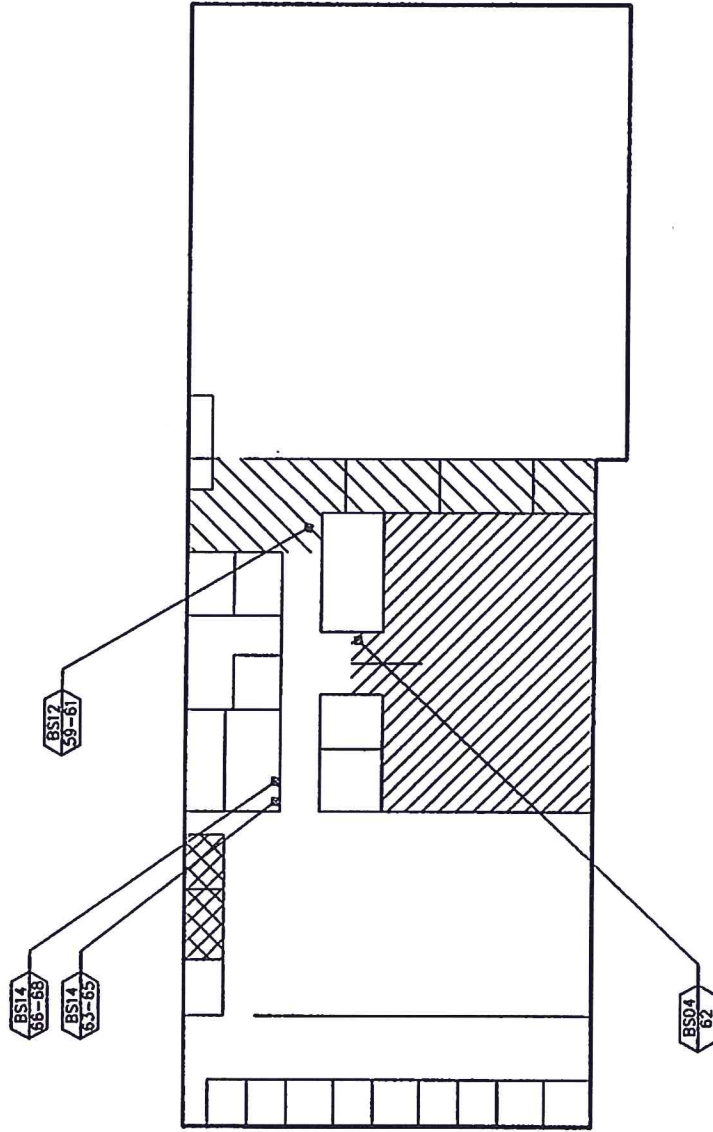
RESPONSE
CODE

— HALL-THORP
DEPARTMENT STORES
410 WEST 17TH ST
LAUREL, KANSAS 66044

DATE 12/14/88
0020088

AHERA
COMPLIANCE PROGRAM

05-9018-002-008
SEQUOIA UNION SCHOOL DISTRICT
SEQUOIA HIGH SCHOOL
GIRLS GYM



LEGEND:

 VINYL FLOOR TILE

 DROP, LAY IN, ACOUSTICAL

 SPRAY/TROWEL APPLIED, MATERIAL

 LOCATION OF CAUTION LABEL

 SAMPLE LOCATION

 DAMAGE AREA

 RESPONSE CODE

— HALL-KORVEL — **RESPONSE CODE**
 440 WEST FIFTH STREET
 LAUREL, MONTG 604
 DATE 12/14/88 002009

AREA
COMPLIANCE PROGRAM
 05-9018-002-009
 SEQUOIA UNION SCHOOL DISTRICT
 SEQUOIA HIGH SCHOOL
 LARGE GYMNASIUM